

OVERVIEW

Marvell® has introduced a new development tool—the Easy Plug Computer Installer (EPI)—to help simplify software development and open new opportunities for Plug Computing. The open source EPI is the first wizard-based installation tool for Marvell’s Plug Computer platform, providing developers worldwide with a better way to integrate their low-power and affordable Plug Computing solutions. The EPI provides seamless interaction with Marvell’s ARMADA™ 300/310 processor family, making it faster and easier than ever to bring innovative, performance-bound digital home applications and services to market.

Marvell’s EPI can be used to install Linux distributions, file systems (i.e., gzipped, tar ball), file system images (i.e., dd images) or single applications. The application provides USB key or HTTP-based list retrieval, further expanding the ways in which developers can access and update Plug Computers. Once applications are available, the Plug Computer can be connected to the EPI client computer using the FTDI-to-serial terminal driver to start the process.

The EPI is a user friendly, open source (Lesser General Public License) application to help develop Plug Computing solutions. Developers will have access to step-by-step instructions for successful deployment, along with access to new developments put forth by the open source community. The application is compatible with Fedora® 11 (32/64bit), Ubuntu 9.04 (32bit), Microsoft® Windows® XP SP2/3, Microsoft® Windows Vista® 7 (32bit) and Mac OS® X (Leopard®).

Other features include:

- A PC-based application built with QT4 that allows Plug Computer users to perform the following:
 - Burn uboot to NAND flash
 - Burn distro (plus kernel) to NAND flash or MMC
- Supports any Plug Computer FTDI vendor/product IDs
- Installation procedure uses FAT32 formatted USB disk-on-key (DOK)
- Source code-released to the community as LGPL

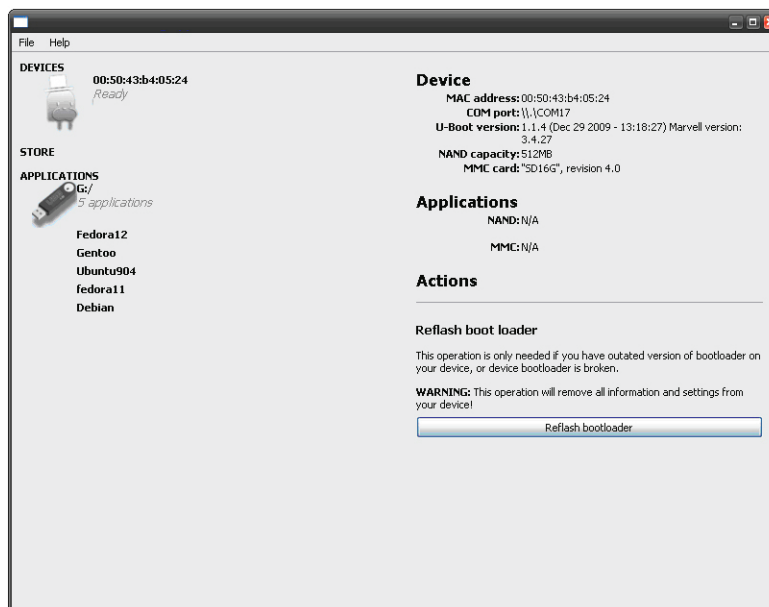


Fig 1. Easy Plug Computer Installer (EPI)

▶ KEY FEATURES AND BENEFITS

FEATURES	BENEFITS
<ul style="list-style-type: none"> • A PC-based application built with QT4 • OpenOCD 	<ul style="list-style-type: none"> • The EPI is a cross-platform application development framework, widely used for the development of GUI programs • The open on-chip debugger aims to provide debugging, in-system programming and boundary-scan testing for embedded target devices. • The EPI is used to burn uboot and uboot environment parameters to NAND flash
<ul style="list-style-type: none"> • Uboot • Linux initrd 	<ul style="list-style-type: none"> • Developers can build intelligent 3G/WLAN/wired converged networks: <ul style="list-style-type: none"> – Allows L2 and L3 roaming and mobility – Native mobility support • The distribution burning vehicle loads to the Plug Computer's RAM after being copied from USB DOK and performs the actual kernel/rootfs burn to NAND flash

▶ DIAGRAM

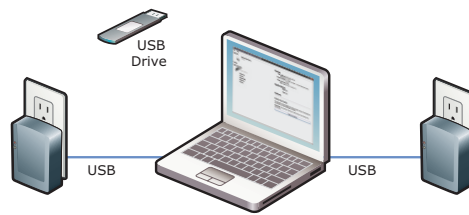


Fig 3. Installation Diagram

▶ WEBSITES

The Easy Plug Computer Installer application can be downloaded here <http://sourceforge.net/projects/epia/>

Join the developer's community <http://plugcomputer.org/plugforum/index.php?action=forum>

For more information about Plug Computer: <http://plugcomputer.org/>

THE MARVELL ADVANTAGE: Marvell chipsets come with complete reference designs which include board layout designs, software, manufacturing diagnostic tools, documentation, and other items to assist customers with product evaluation and production. Marvell's worldwide field application engineers collaborate closely with end customers to develop and deliver new leading-edge products for quick time-to-market. Marvell utilizes world-leading semiconductor foundry and packaging services to reliably deliver high-volume and low-cost total solutions.

ABOUT MARVELL: Marvell is a leader in storage, communications, and consumer silicon solutions. Marvell's diverse product portfolio includes switching, transceiver, communications controller, processor, wireless, power management, and storage solutions that power the entire communications infrastructure, including enterprise, metro, home, storage, and digital entertainment solutions. For more information, visit our Web site at www.marvell.com.



Marvell Semiconductor, Inc.
5488 Marvell Lane
Santa Clara, CA 95054
Phone 408.222.2500
www.marvell.com

Copyright © 2010. Marvell International Ltd. All rights reserved. Marvell, Moving Forward Faster, and the Marvell logo are registered trademarks of Marvell or its affiliates. Armada, Marvell Smart, and Sheeva are trademarks of Marvell or its affiliate. All other trademarks are the property of their respective owners.
EPI-03 7/10